



01825 762774



www.uckfieldtc.gov.uk



Civic Centre Uckfield,
TN22 1AE

UCKFIELD TOWN COUNCIL

PRECEPT LEAFLET 2025/26



Did you know?
In the last 18 months,
Uckfield Town Council
has planted 680
trees!

What is a Town Council?

Uckfield Town Council operates at the grassroots level of local government, working alongside Wealden District Council and East Sussex County Council to look after your town.

With a large asset portfolio, Uckfield Town Council owns a number of buildings and open spaces.

Whether issues fall within our responsibility or that of our partners, we listen to residents and take action by resolving matters ourselves or raising them with the relevant body.

What do we do?

- Uckfield Town Council own and manage...
- 10 buildings
- 17 open spaces
- 8 play areas
- 7 recreation grounds (including football and cricket pitches)
- 6 allotment sites (with 245 plots)
- 4 woodlands (including 2 ancient)
- 2 local nature reserves
- 192 streetlights
- 70 litter bins on Town Council land and some street furniture

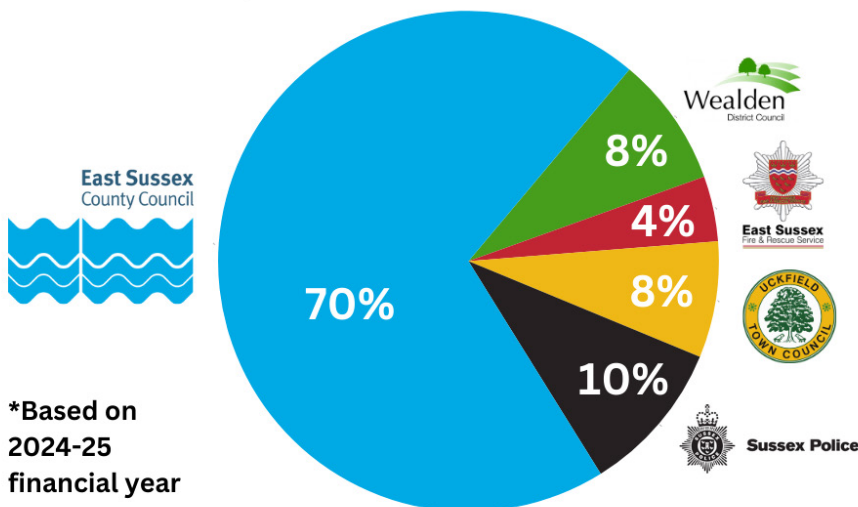
Your Council Tax:

Of the total Council Tax you pay to Wealden District Council each year, the funds are spread across three local authorities and your local emergency services.

The amount you pay to each authority is shown as a percentage here:

Where your Council Tax goes

Your Council Tax payment helps support us and four other vital local authorities*:



*Based on
2024-25
financial year

Your financial contribution in 2025/26:

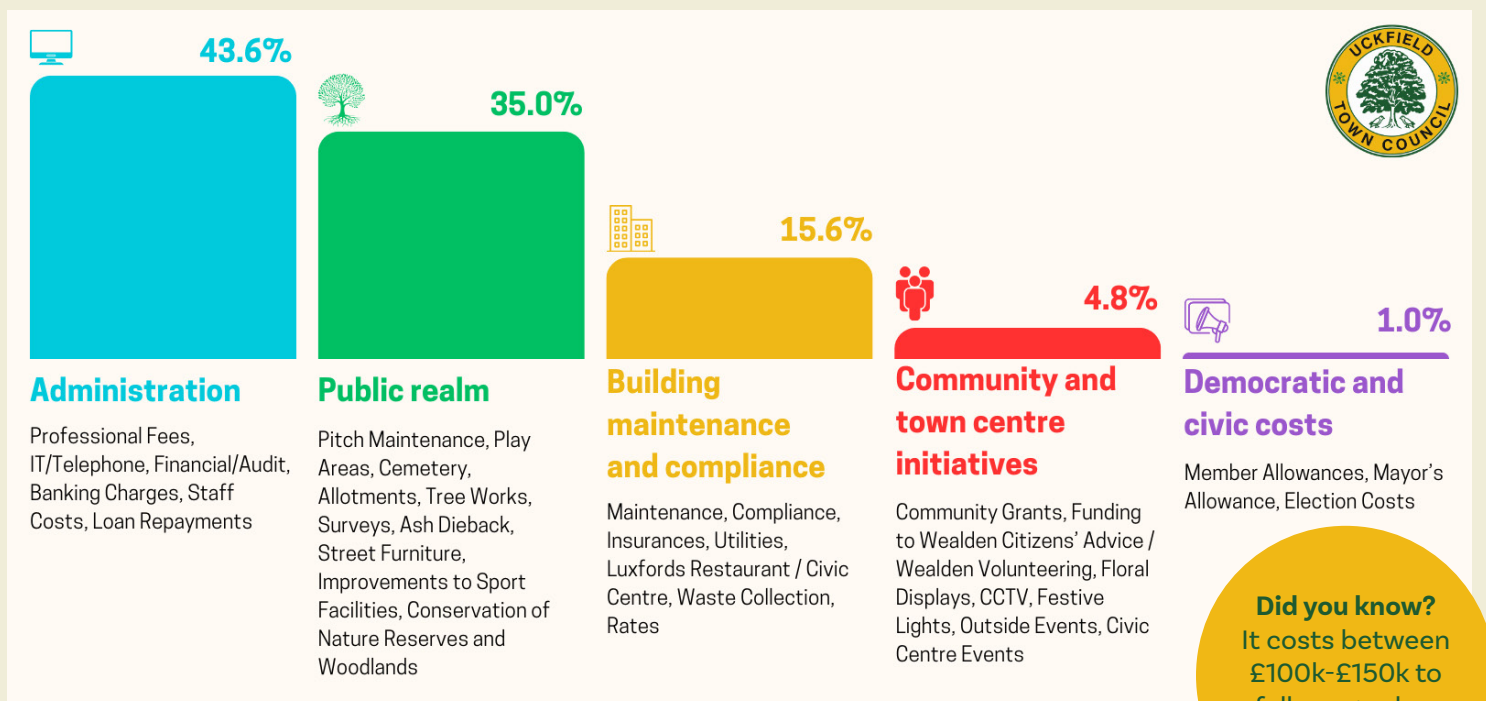
In 2025/26, Uckfield Town Council forecast expenditure of over £1.9 million to maintain and improve existing facilities, meet rising costs, deliver a strong level of provision, and set aside funds for upgrades of our grounds and sports facilities.

We do not expect the precept to cover the full amount of funding required. Year on year, Uckfield Town Council continues to generate **one-third** of the funds we need, through our own income streams.

This year, the precept will form £1,321,884 of the £1,986,904 adopted budget. The total precept required is spread across Council Tax-paying households. The proportion varies depending on your property's Council Tax band (Band A the lowest and H, the highest).

The adopted budget will see an increase of 58 pence per week for residents of Council Tax Band D. This decision has been taken to address shortfalls in existing service provision and reduce reliance on the Council's capital funds (reserves).

How the precept will be spent in 2025/26:



Did you know?
It costs between £100k-£150k to fully upgrade a children's play area

Highlights from our 2024 Residents' Survey show these are important issues:

- 96.5% - Providing and emptying of litter bins
- 91.9% - Preserving the town's green corridors
- 89.0% - Providing, maintaining and improving the town centre's CCTV
- 87.9% - Improving town centre Christmas lights

Amongst a number of key priorities, in 2025/26, we will:

- Frequently collect from 70 litter bins on Uckfield Town Council land
- Commission wildlife appraisals and surveys in our nature reserves
- Fund repairs and improvements to the town centre's CCTV system
- Tender for a new festive lighting contractor for Christmas 2025



For more information, please visit www.uckfieldtc.gov.uk/faqs

